



SMD Seam Sealed Crystals 2.0×1.6×0.5 mm CRYSTAL 2016-4 26 Mhz 10PPM 10PPM 16PF

P/N: C2016426.00MHZ1010162R

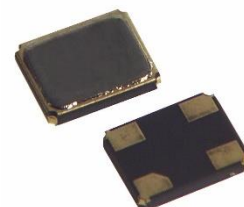
Non-EOL Statement

We hereby confirm that the following product is still in normal production and supply, and it is not an end-of-life product:

- ALDINET: HCS201626161010
- CRYSTAL 2016-4 26 MHz 16pF 10ppm 10ppm -20+70° MSC
- MSC Manufacturer PN: C2016426.00MHZ1010162R

FEATURE

- Size 2.0 × 1.6, Ultra-thin, thickness 0.5mm
- High precision and high frequency stability
- Excellent heat resistance and environmental characteristics
- Designed for automatic mounting and reflow soldering
- RoHS Compliant / Pb Free



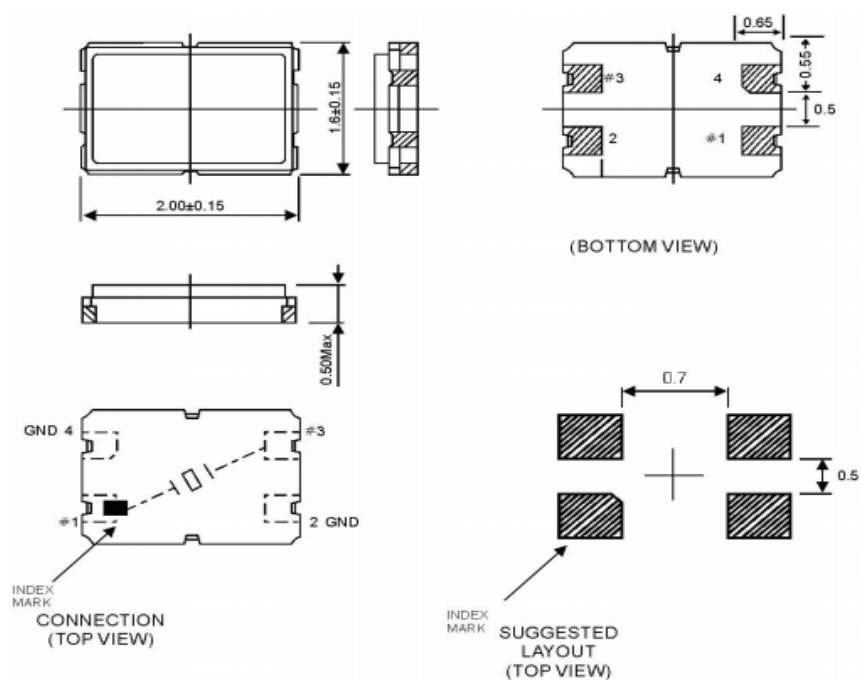
ELECTRICAL SPECIFICATIONS

Output Frequency Range	26.0000MHz
Mode	AT / Fundamental
Frequency Tolerance (at 25°C)	±10ppm
Frequency Stability Over Operating Temperature Characteristics	±10ppm
Operating Temperature Range	-20 °C to +70°C
Storage Temperature Range	-55°C to + 125 °C
Shunt Capacitance (C ₀)	3.0 pF Max
Driver Level (Typical)	1μW-200μW (50μW typical)
Load Capacitance (C _L)	16pF
Aging @25°C 1 st year (Max)	±3ppm/year
Insulation Resistance	More than 500Mohms at DC100V

SMD Seam Sealed Crystals 2.0×1.6×0.5 mm CRYSTAL 2016-4 26 Mhz 10PPM 10PPM 16PF

P/N: C2016426.00MHZ1010162R

Dimension



REFLOW CONDITION

